

CSR USB SPI

说明书

2013年4月

目录

1、概述.....	2
2、安装.....	4
4、使用.....	14

1、概述

版本历史：

版本	日期	作者	摘要
V1.0	2013-4-1		第一版说明书

CSR USB SPI 概要：

- 1、CSR USB-SPI 调试器是真正的 USB 接口,比并口速度快很多，很好地解决了电脑没有并口用户的烦恼。
- 2、CSR USB-SPI 支持 CSR 全系列调试工具，包括 BlueFlash，PSTOOL, BlueTest3, BlueLab 等。
- 3、CSR USB-SPI 可以通过 Bluelab 下载调试程序，支持断点调试，单步调试等，通过 BlueFlash 烧写程序等。

4、支持 CSR 所有系列蓝牙芯片,例如

BC2 系列(例 BC215159A 等),

BC3 系列(例 BC31A223,BC358239A 等)

BC4 系列(例 BC413159A06,BC417143B,BC419143A 等),

BC5 系列(例 BC57F687,BC57E687,BC57H687C 等),

BC6 系列(例 BC6110,BC6130,BC6145,CSR6030,BC6888 等),

(注：不支持 BC6145 CVC 调试，CSR 官方也不支持)

BC7 系列(例 BC7820,BC7830 等)

BC8 系列(例 CSR8610,CSR8620,CSR8640,CSR8645,CSR8605,CSR8670 等)

BLE 系列(例如 CSR1000,CSR1001 等)

5、支持所有 Windows 操作系统：

- Windows 98SE
- Windows ME
- Windows 2000 SP4
- Windows XP SP2 and above (32 & 64 bit)
- Windows Server 2003 (32 & 64 bit)
- Windows Server 2008 / 2008 R2 (32 & 64 bit)
- Windows Vista (32 & 64 bit)
- Windows 7 (32 & 64 bit)

6、体积小,便于携带,纯铝壳坚硬不易损坏

2、安装

安装驱动说明：

Connecting a USB-SPI Converter to a PC for the First Time

This section describes how to connect a CSR USB-SPI converter to a PC for the first time and how to install the driver. If you have already done this, go to Section 4.

1. Connect the USB-SPI converter to the PC. The **Found New Hardware Wizard** dialogue displays.

2. Select the **No, not this time** button and click **Next**.



Figure 3.1: The Found New Hardware Wizard

3. Select the **Install from a list or specific location (Advanced)** button and click **Next**.

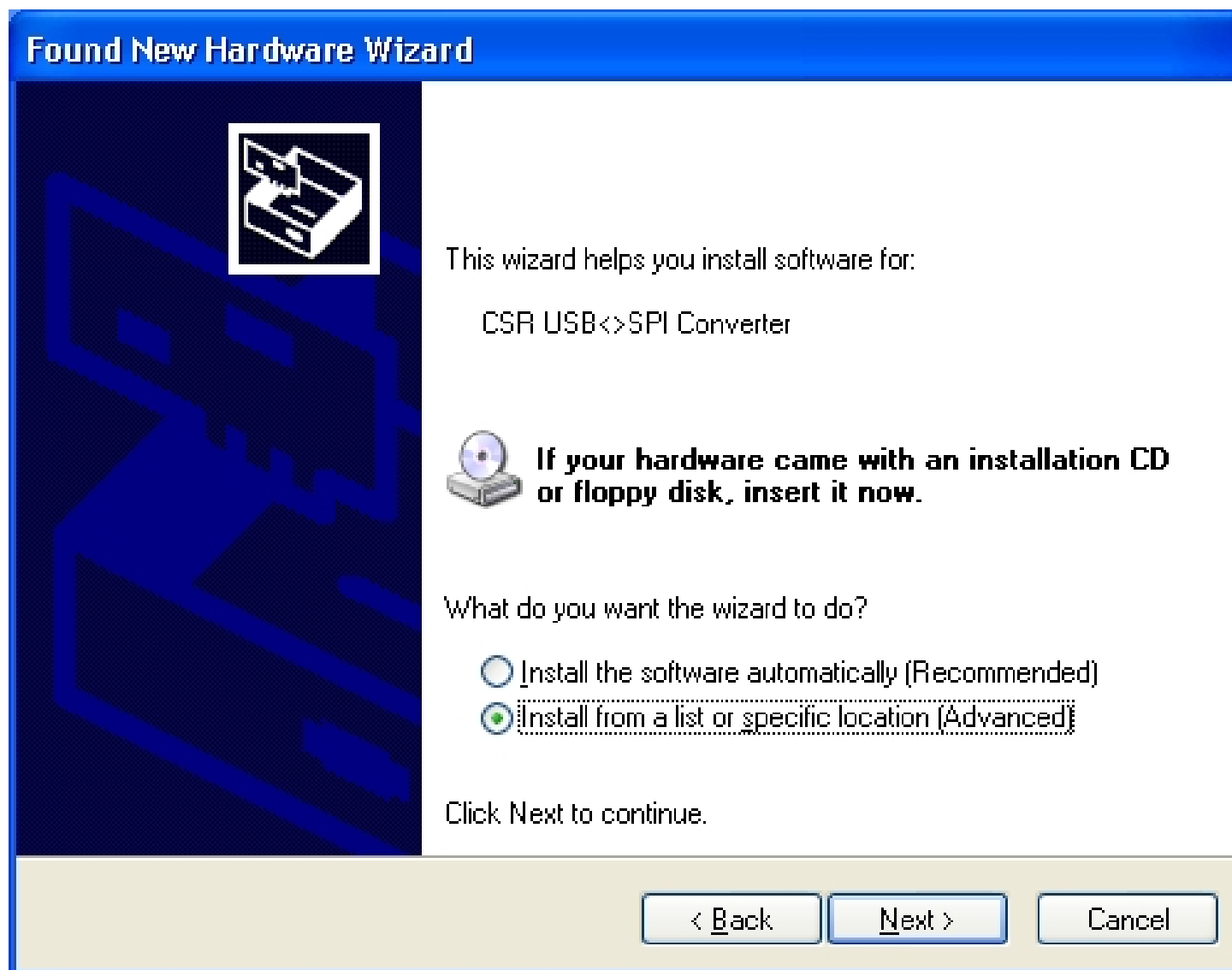


Figure 3.2: Installing from a Specific Location

4. Select the **Don't search, I will choose the driver to install** button and click **Next**.

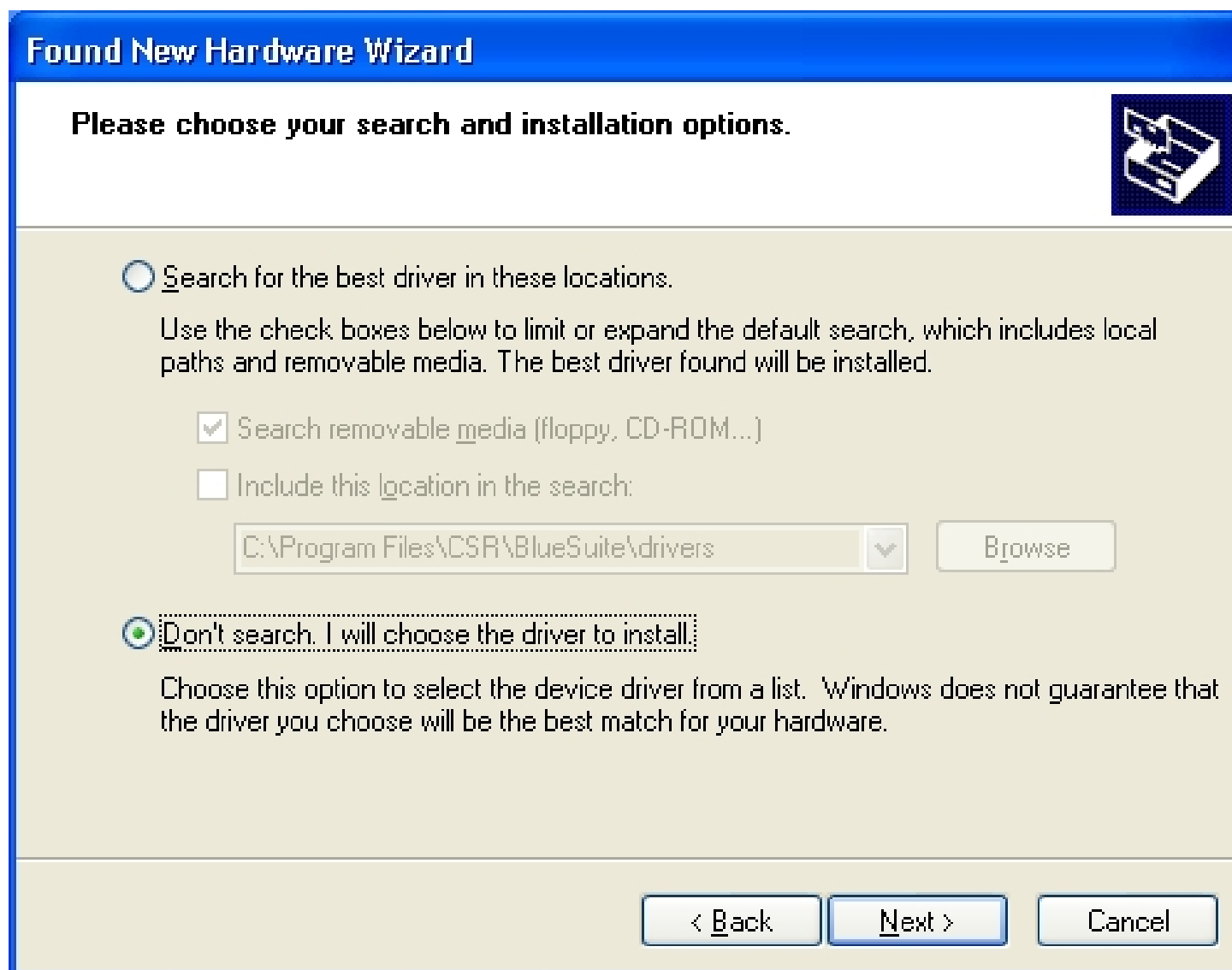


Figure 3.3: Choosing to Select the Driver Manually

5. Select **Show All Devices** and click **Next**.

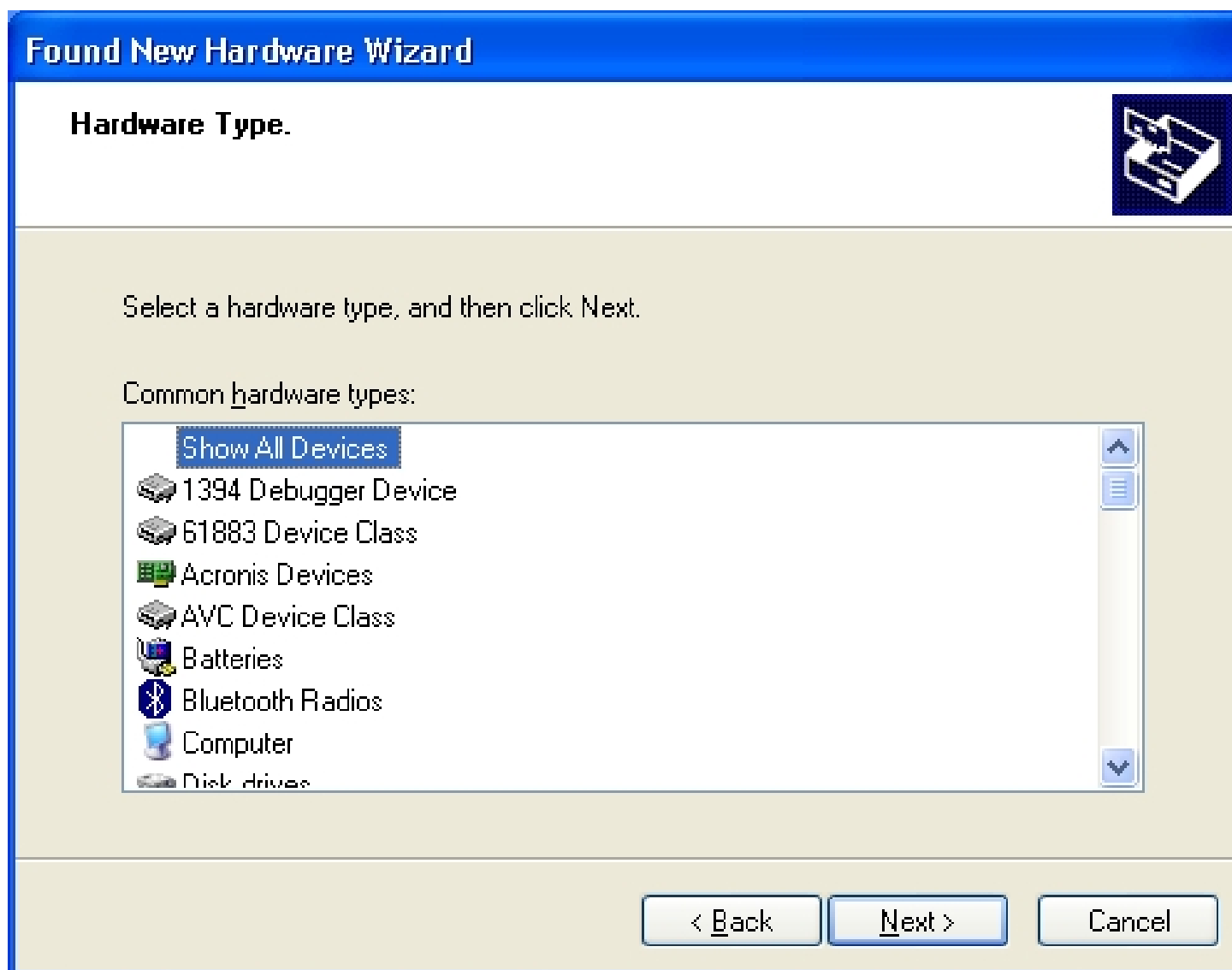


Figure 3.4: Selecting the Hardware Type

6. Click **Have Disk**.

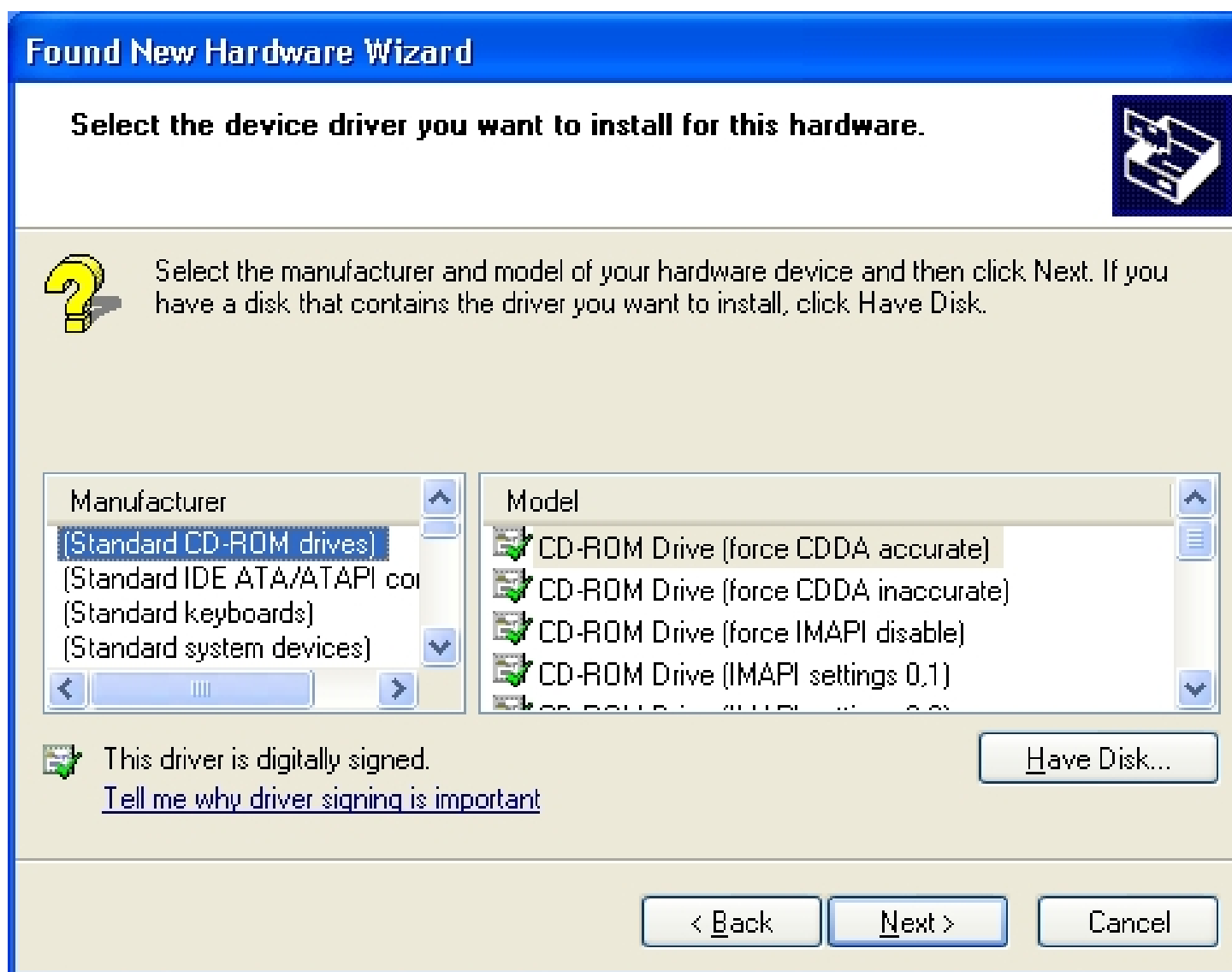


Figure 3.5: Selecting the Have Disk Button

7. Browse to the **/drivers/** sub-directory of the BlueSuite installation directory and click **OK**.

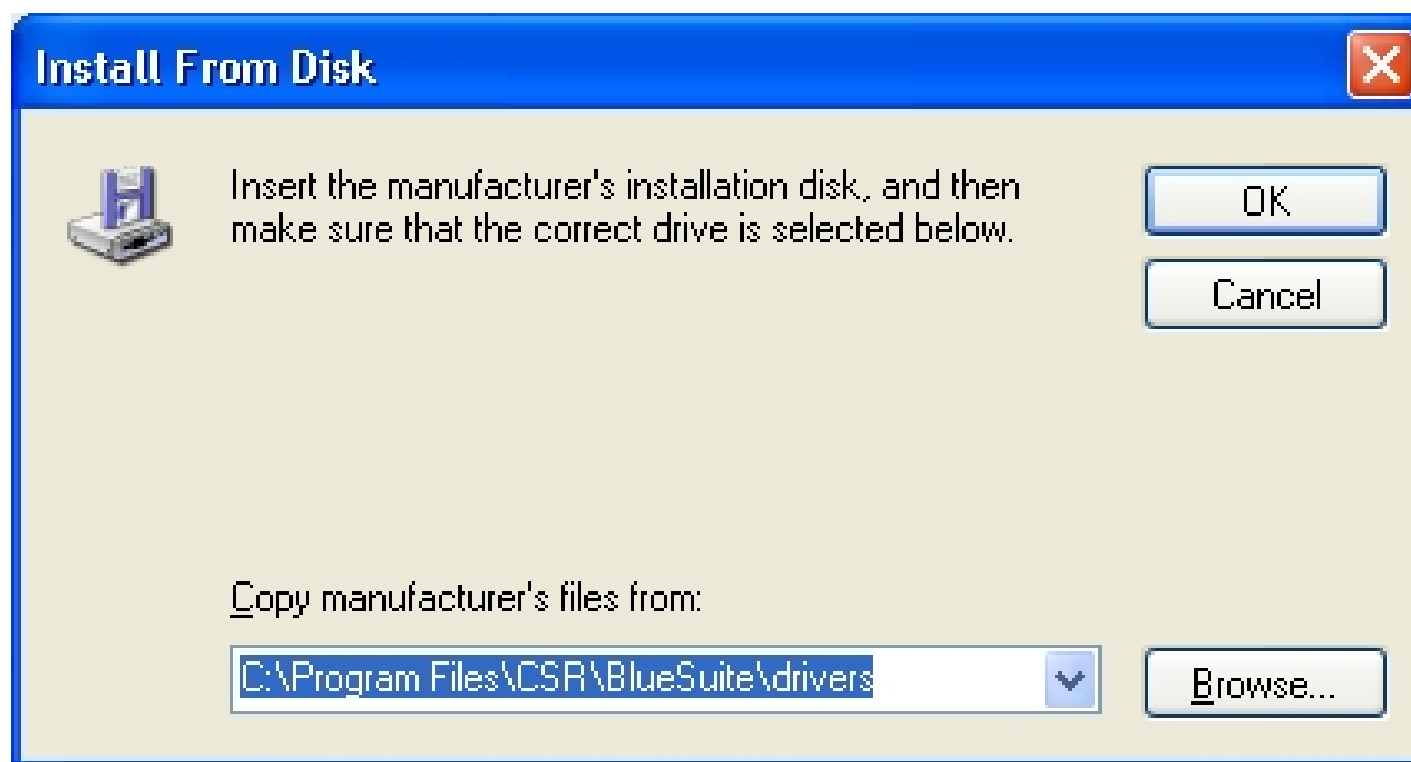


Figure 3.6: Selecting a Driver from BlueSuite

8.Ensure that the **CSR USB<>SPI converter** driver is selected and click **Next**.



Figure 3.7: Selecting the Device Model

9. Click **Continue Anyway**.



Figure 3.8: Hardware Installation Dialogue

10. Click **Finish**.



Figure 3.9: Completing the Found New Hardware Wizard

11. Open the Windows Device Manager and check that the USB-SPI converter has installed correctly.

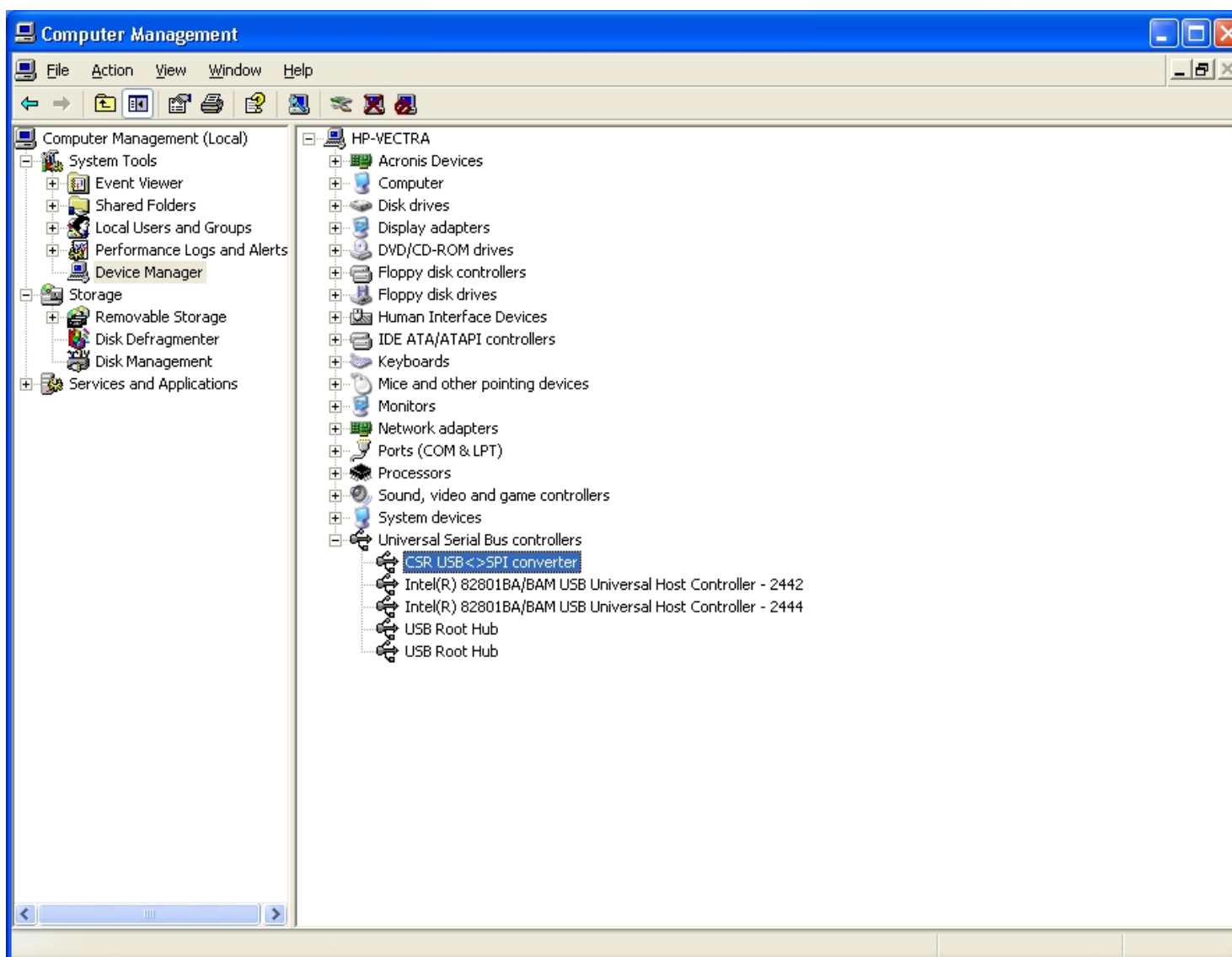


Figure 3.10: Windows Device Manager

3、使用

1、硬件接口说明



- A、连接 USB SPI 至电脑
- B、如果上图中：GND、MISO、CSB、MOSI、CLK 分别连接你的 CSR 蓝牙的 SPI 角，顺序对应。
- C、Power 灯为电源状态指示灯
- D、Data 灯为数据灯，当烧录程序或下载程序时，此灯会闪烁。